

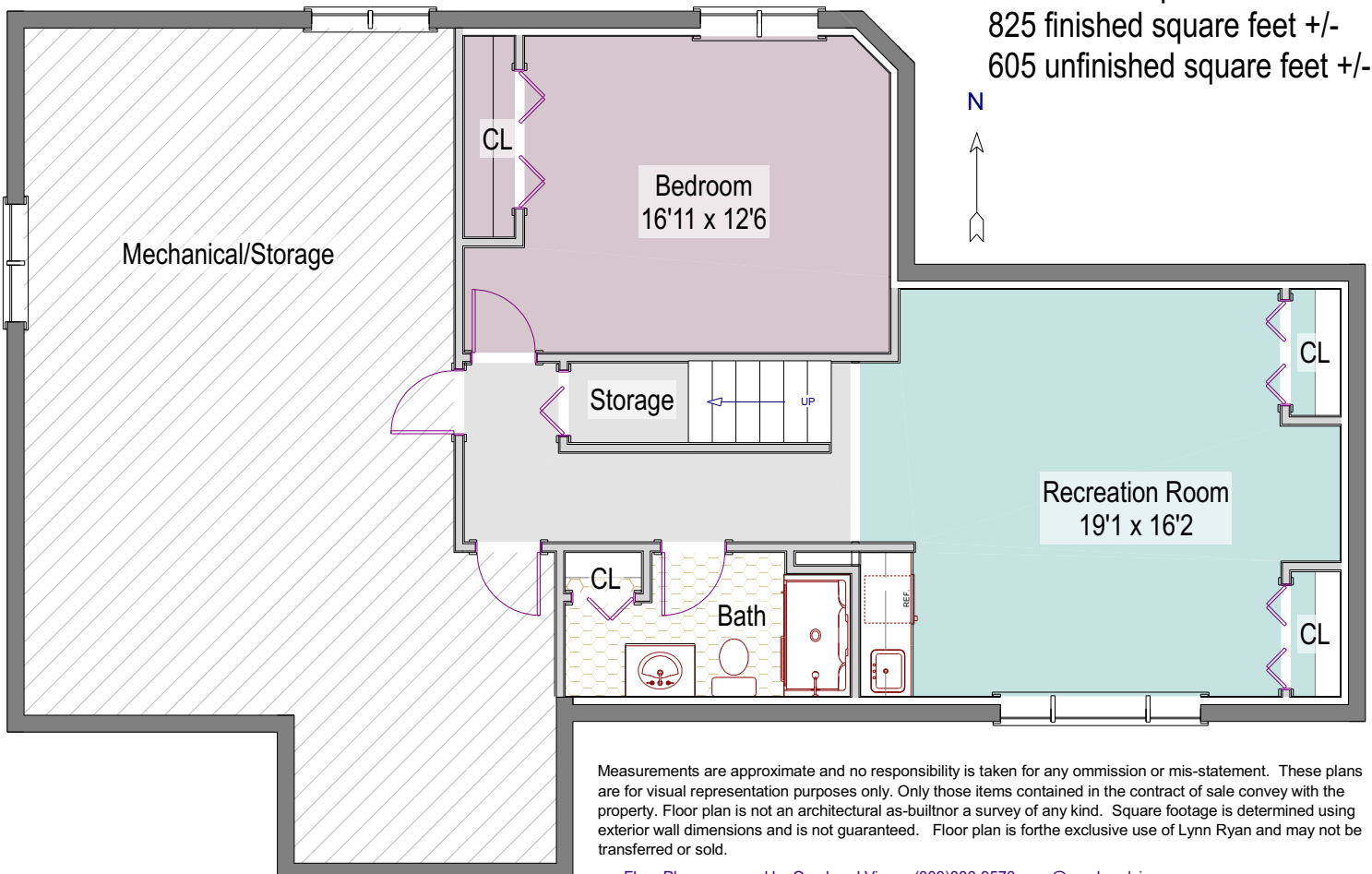
1151 Juniper Avenue  
Boulder, Colorado

Upper Level - 1187 square feet +/-

Lynn Ryan  
(303)489-0309 cell  
lynn@lynnryanboulder.com  
www.lynnryanboulder.com



Lower Level - 1430 square feet +/-  
825 finished square feet +/-  
605 unfinished square feet +/-



Measurements are approximate and no responsibility is taken for any omission or mis-statement. These plans are for visual representation purposes only. Only those items contained in the contract of sale convey with the property. Floor plan is not an architectural as-built nor a survey of any kind. Square footage is determined using exterior wall dimensions and is not guaranteed. Floor plan is for the exclusive use of Lynn Ryan and may not be transferred or sold.

Floor Plans prepared by Overhead Views, (303)886-9578, [esw@overheadviews.com](mailto:esw@overheadviews.com)