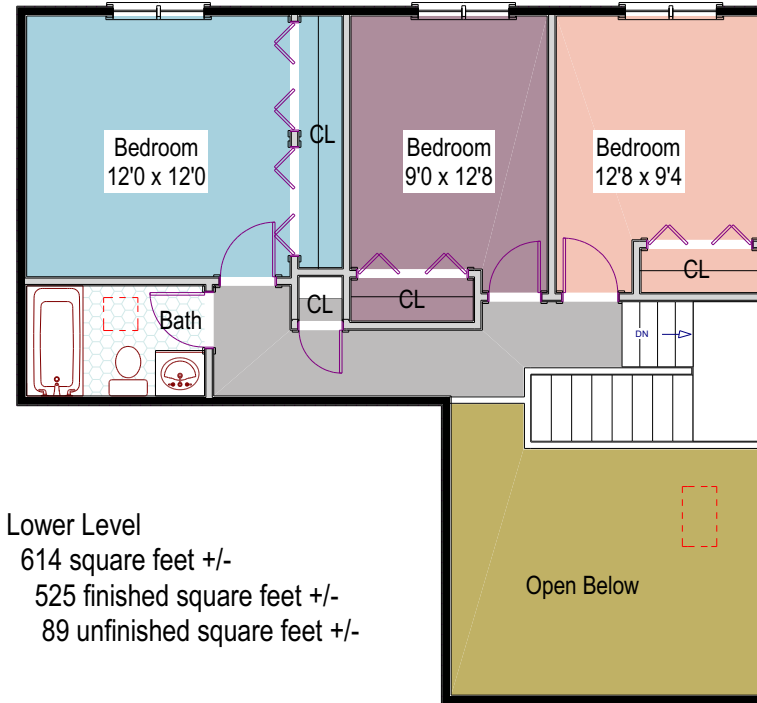


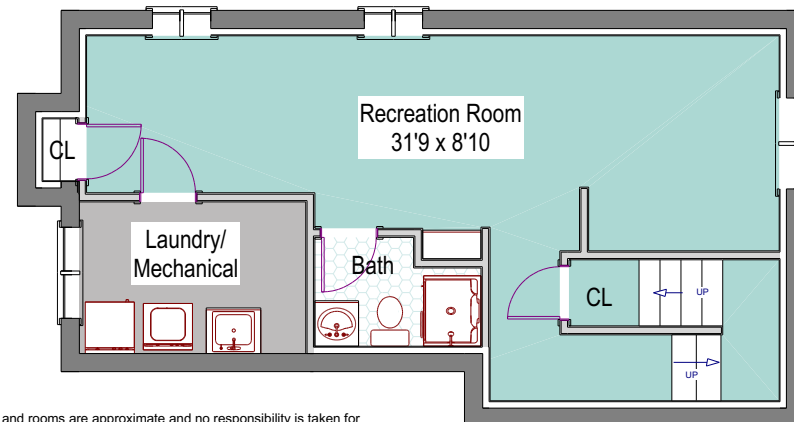
4165 Piedra Court  
Boulder, Colorado

Main Level - 722 square feet +/-

Upper Level - 656 square feet +/-



Lower Level  
614 square feet +/-  
525 finished square feet +/-  
89 unfinished square feet +/-



Lynn Ryan  
(303)489-0309 cell  
lynn@lynnryanboulder.com  
www.lynnryanboulder.com



While every attempt has been made to ensure the accuracy of the floorplan contained here, measurements of doors, windows and rooms are approximate and no responsibility is taken for any omission or mis-statement. These plans are for visual representation purposes only and should be used as such by any prospective purchaser. Only those items contained in the contract of sale convey with the property. Floor plan is not an architectural as-built nor a survey of any kind. Square footage is determined using exterior wall dimensions and is not guaranteed. Floor plan is for the exclusive use of Lynn Ryan and may not be transferred or sold.

Floor Plans prepared by Overhead Views, (303)886-9578, esw@overheadviews.com